



Application: Suitable for the ventilation of large halls, restaurants, offices etc.

Duct (In-Line) Fans for Round Section Duct Systems MF Series

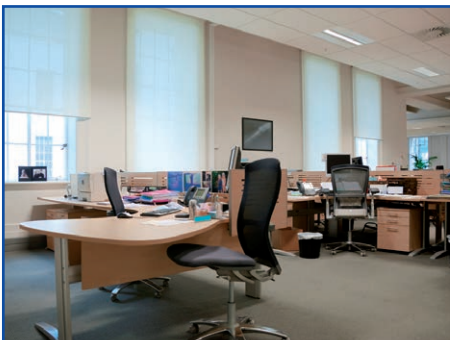
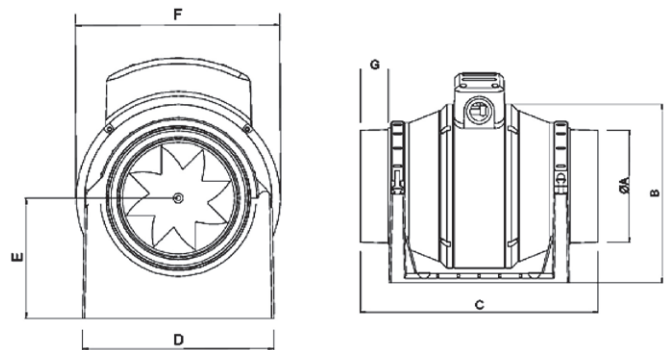
- Available in 4 sizes: 100mm, 125mm, 150mm, 200mm.
- Air flow 245 m³/h to 910 m³/h.
- Single direction, 2 speed selectable motor, for the models MF100, MF125, MF150 and 3 speed electrical motor for the model MF200.
- Designed to meet IPX4.
- Easy installation.
- Maintenance of the fan without disconnecting it from the air duct network.

MF Series

Type	RPM (max)	Power (W) (max)	Air Flow (m ³ /h) (max)	Noise Level dB (A)	Weight (Kg)	Price
MF 100	2.400	25	245	24	2,1	€ 115,00
MF 125	2.400	33	310	25	2,1	€ 127,00
MF 150	2.400	48	500	35	3,2	€ 148,00
MF 200	2.750	85	910	48	4,5	€ 179,00

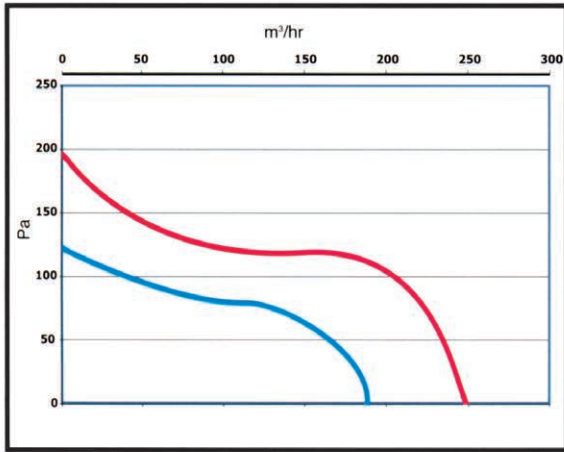
Dimensions MF Series

Type	A (mm)	B (mm)	C (mm)	D (mm)	E (mm)	F (mm)	G (mm)
MF 100	98	180	298	168	100	168	68
MF 125	120	180	260	168	100	168	50
MF 150	140	220	320	140	120	140	30
MF 200	197	244	354	142	140	230	52



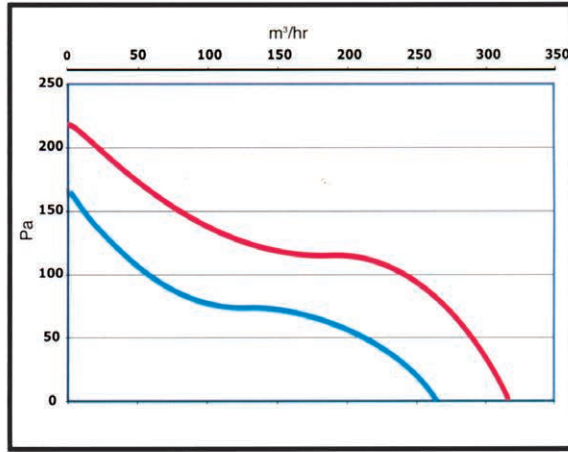
MF Series Performance Curves

MF100 100mm/4"



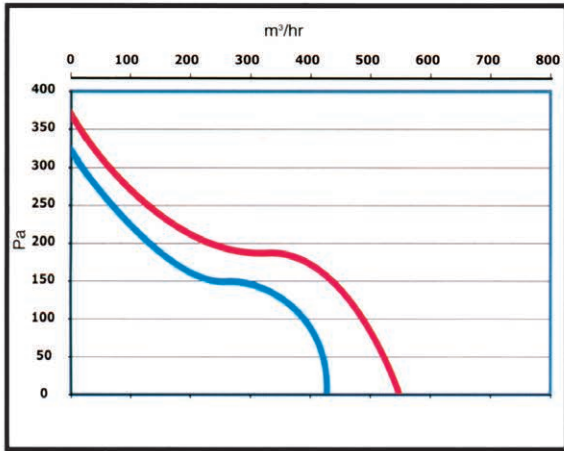
Max — Min

MF125 125mm/5"



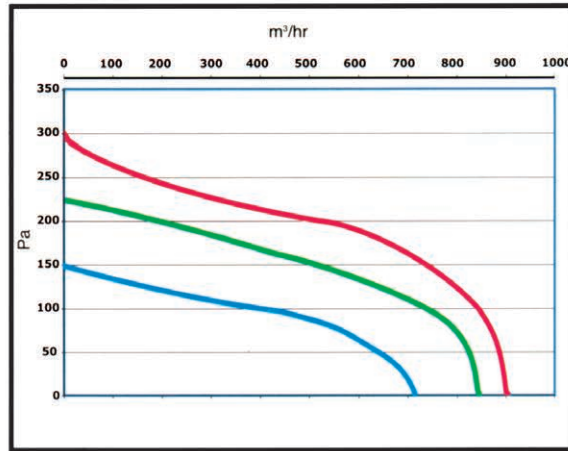
Max — Min

MF150 150mm/6"



Max — Min

MF200 200mm/8"



Max — Min



- High Construction Quality electric motors
3 Years Warranty or 30.000 working hours.
- 2 speed selectable motor, for the models MF100, MF125, MF150 and 3 speed electrical motor for the model MF200.



Accessories



AK 50 Speed controller



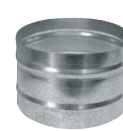
BU-160 control unit



Air Valves



Grilles



Connection Necks



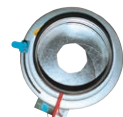
Air ducts



Aluminum air ducts



Back-Draught Shutters



Round Cross Section Rotary Diaphragm



Manual Dampers



Constant Air Flow Regulars (Dampers)



Sound Barriers